

Open ended wrenches - Angle head

4 to 16 Nm (2.9 to 11.8 ft.lb) - 240 - 320 rpm

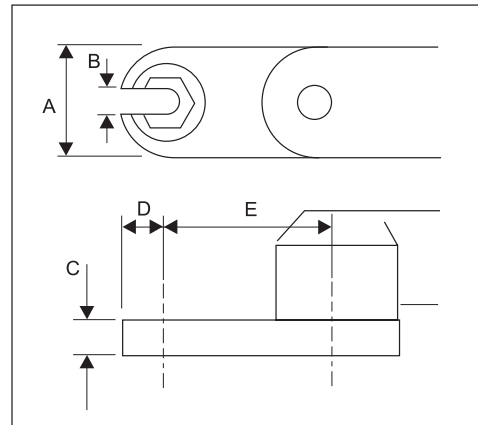
Please contact CP for application where tool isn't shown



Lou Zampini & Associates
 2 Douglas Pike
 Smithfield, RI 02917
 401 354 8878 , 1800 353 4676
 FAX 401 353 0113
<http://www.LouZampini.com>
<http://www.PneumaticToolsOnline.com>



ACROSS FLATS	A		B		C		D		E	
	mm	in.	mm	in.	mm	in.	mm	in.	mm	in.
17	48	1.89	12	0.47	14	0.55	19.0	0.74	91.5	3.60
13	38	1.49	7	0.27	12	0.47	14.7	0.58	79.6	3.13
12	38	1.49	7	0.27	12	0.47	14.7	0.58	79.6	3.13
10	38	1.49	7	0.27	12	0.47	14.7	0.58	79.6	3.13
8	38	1.49	7	0.27	12	0.47	14.7	0.58	79.6	3.13
7	38	1.49	7	0.27	12	0.47	14.7	0.58	79.6	3.13



Method of Control

The open ended tools feature a dual action control top.

1. Press lever for tightening.
2. Release lever and press again to mid-position to reverse to open socket position.

Accessories: see page 84

PIC REF	MODEL	PART NUMBER	FREE SPEED		OUTPUT HEX		TORQUE RANGE		LENGTH		WEIGHT		AIR FLOW		AIR INLET		HOSE INT. Ø	
			rpm	mm	Nm	ft.lb	mm	in.	kg	lb.	l/s	cfm	in.	mm	in.			

SHUT OFF

A	SD160-LB240-S-OE17	1463594	240	17	7.0-16	5.2-11.8	453	17.83	1.9	4.19	8.7	18.4	1/4	10	3/8
A	SD160-LB240-S-OE13	1463604	240	13	7.0-16	5.2-11.8	453	17.83	1.8	3.97	8.7	18.4	1/4	10	3/8
A	SD160-LB240-S-OE12	1463614	240	12	7.0-16	5.2-11.8	453	17.83	1.8	3.97	8.7	18.4	1/4	10	3/8
A	SD160-LB240-S-OE10	1463734	240	10	7.0-16	5.2-11.8	453	17.83	1.8	3.97	8.7	18.4	1/4	10	3/8
A	SD120-LB320-S-OE8	1463744	320	8	4.0-12	2.9-8.8	453	17.83	1.8	3.97	8.7	18.4	1/4	10	3/8
A	SD120-LB320-S-OE7	1463754	320	7	4.0-12	2.9-8.8	453	17.83	1.8	3.97	8.7	18.4	1/4	10	3/8
	SD160-LB240-S-OE	1464474	240	3/8" sq.	7.0-16	5.1-11.8			1.5	3.31	8.7	18.4	1/4	10	3/8
	SD120-LB320-S-OE	1464484	320	3/8" sq.	4.0-12	2.9-8.8			1.5	3.31	8.7	18.4	1/4	10	3/8

